

Presentation of optical sorting of bio waste

Southeast municipal association

8 Municipalities

Kalmar, Oskarshamn, Vetlanda, Nybro,
Mörbylånga, Sävsjö, Uppvidinge, Torsås

178 00 inhabitant

Housing	Households
Villa	34 081
Apartments	31 302
Cottages	7 567
Total	72 950

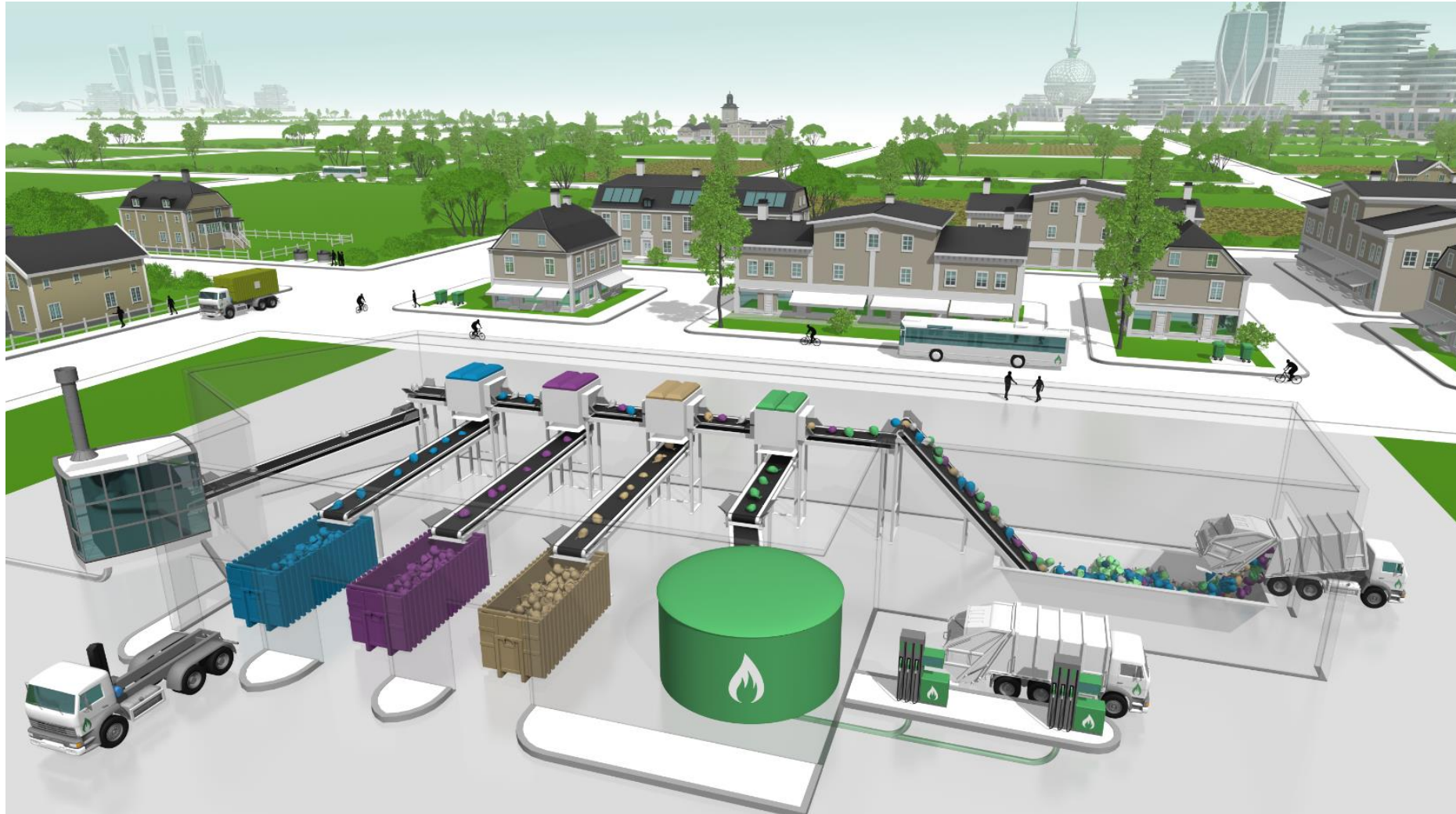
Waste management:

- Household waste
- Recycling
- Bulky waste
- Production of combustible waste to cement plants

2021-06-02



How does it work?



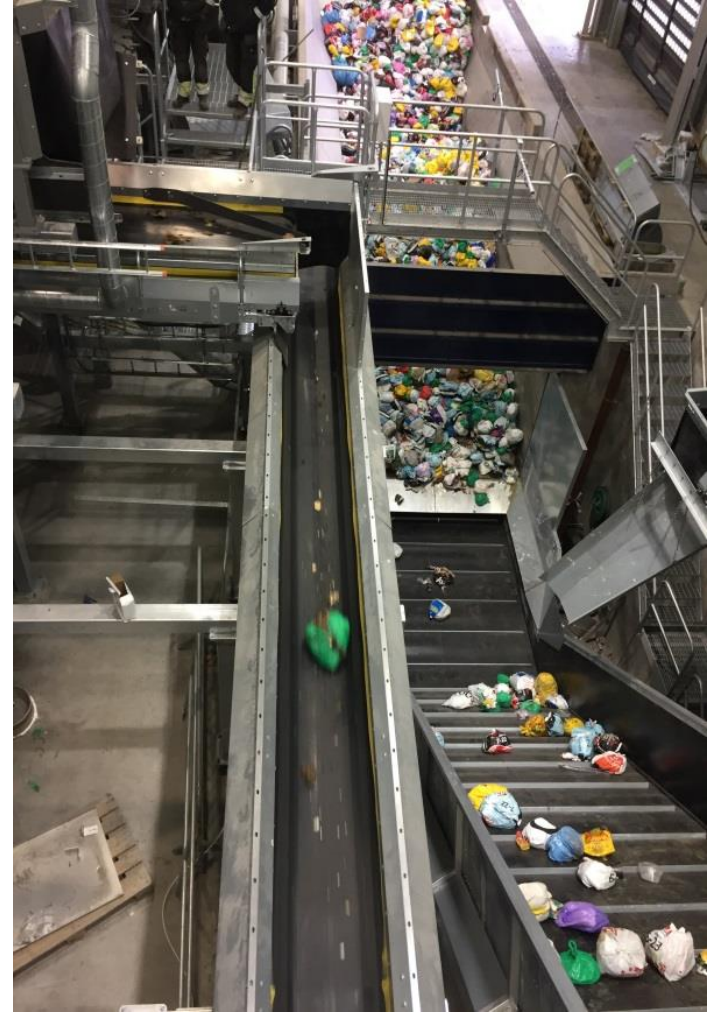
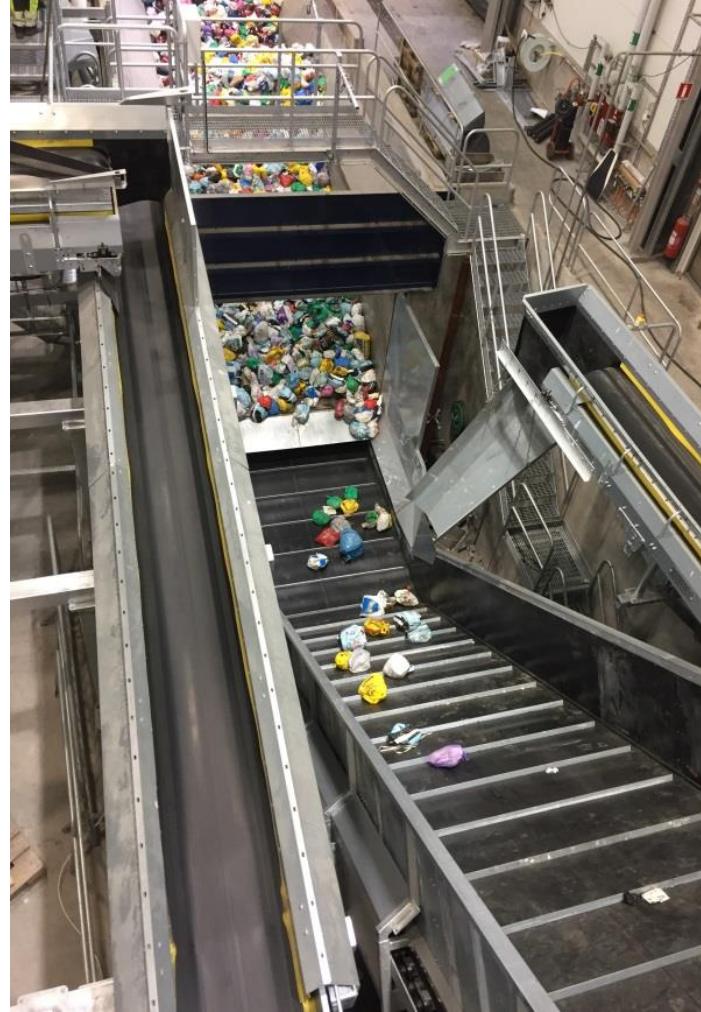
Moskogens sorting facility



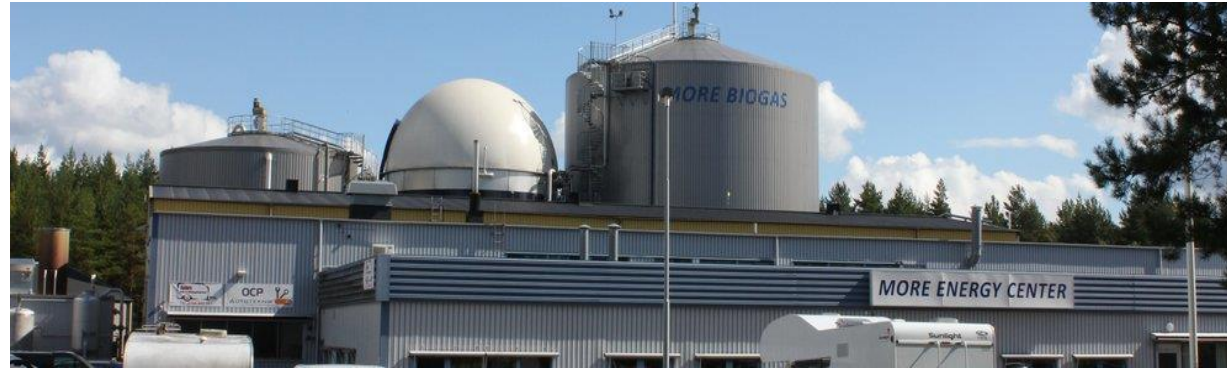
- Optical sorting of waste
- Slurry production from food waste, to be used for production of biofertilizer and biogas
- Production fuel from combustible waste

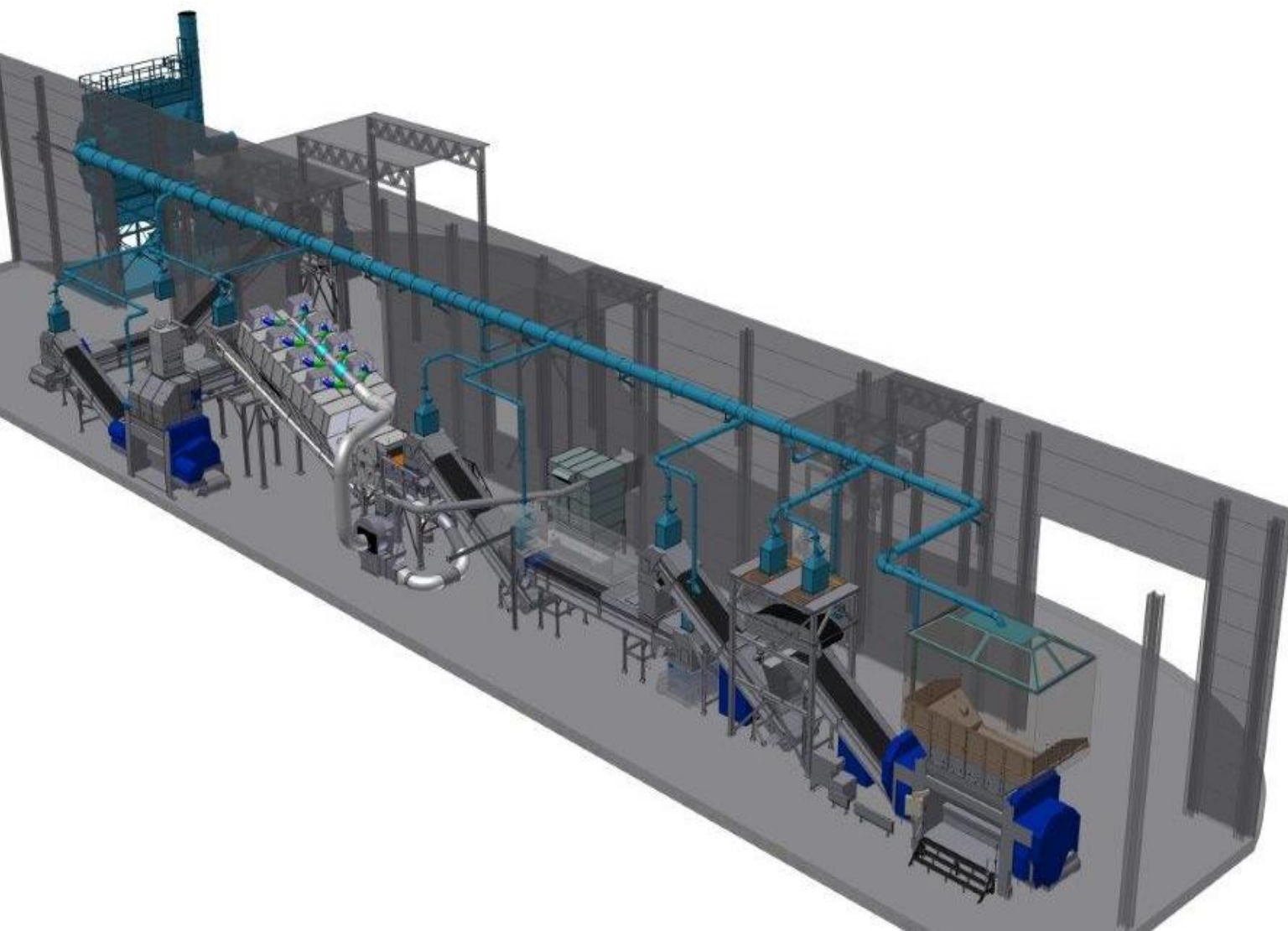
Moskogen sorting facility

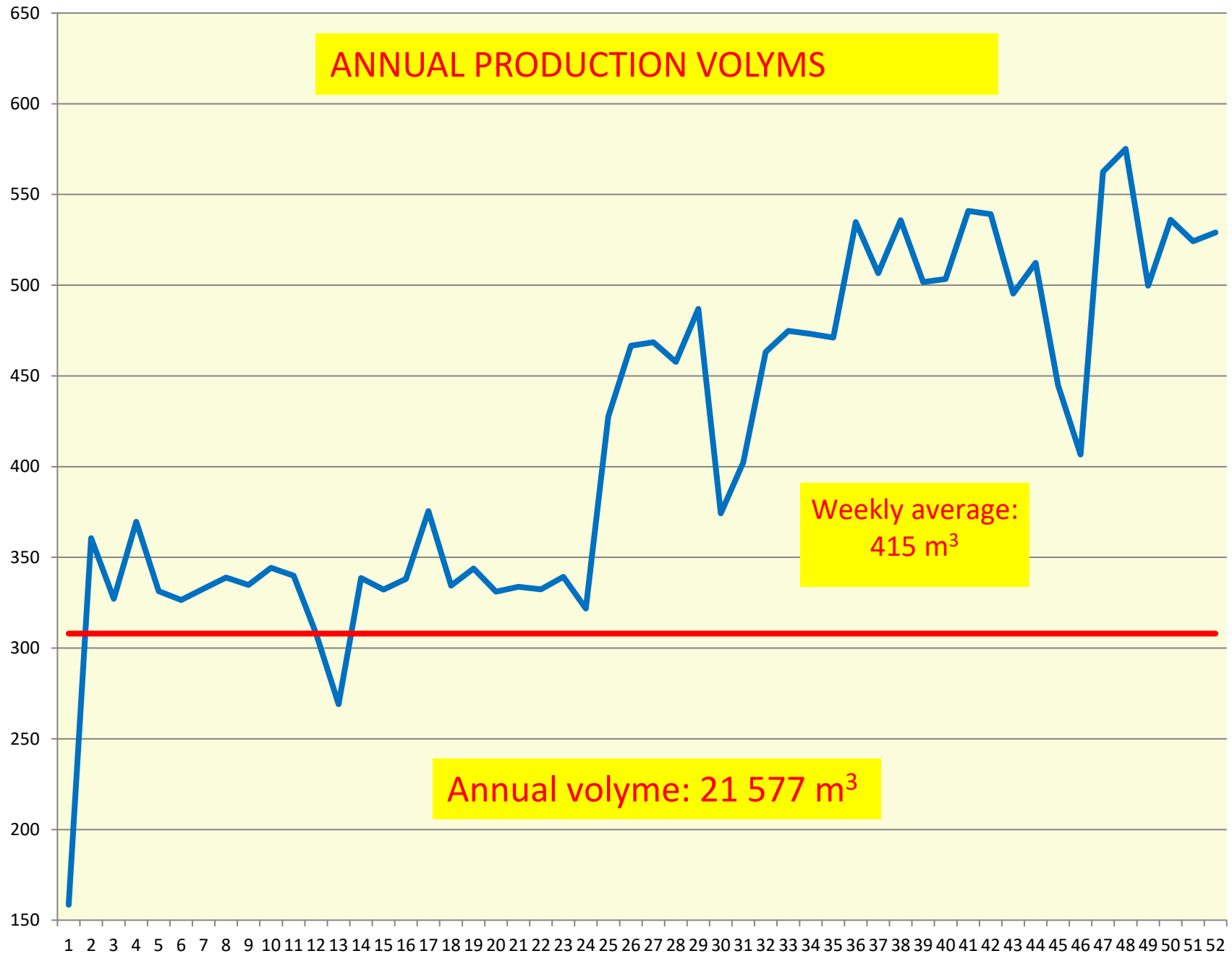
- Built 2016
- Full operation since Mars 2017
- Approx. 110 tons of incoming household waste per day
- Total capacity of 18 tons an hour
- Capacity production of substrate food waste (slurry) - 10 tons per hour
- Speed conveyor - four meters per second
- Speed paddle - four hits every second



Partners – for production of biofertilizer and biogas







Green bag

- ✓ Introduced 2015
- ✓ Average household, three bags per week
- ✓ Only for food waste
- ✓ Discard together with residual waste in one bin
- ✓ Bags are made of recycled plastic,
separated from the food waste in the sorting plant

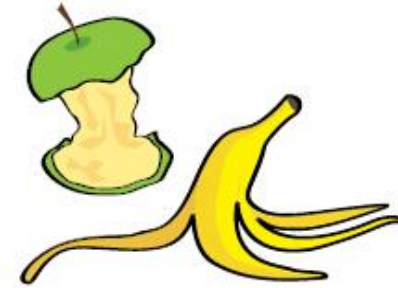


Lägg detta i den gröna påsen



Matrester

Det som blir över på tallriken.



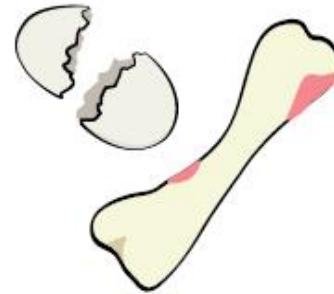
Frukt och grönsaker

Rester och skal samt frukt och grönt som blivit dåligt.



Kaffe och te

Kaffesump, filter och tepåsar.



Skal och ben

Kött- och fiskben, skal från skaldjur och ägg.



Matfett

Smör, margarin, olja och annat matfett.



Environmental objectives

Biowaste

Sorted food waste	50 %	2020
	75 %	2023
Reduction of food waste per capita		
Food waste reduction	20 %	2020 – 2025

- Biofertilizer is local used and reducing the agriculture use of dietary fertilizer
- Biogas is used by the collection vehicles and local buses dietary fertilizer
- All garbage trucks runs on biofuel





Tack
för-resten!

**5 MIL
12 PÅSAR**



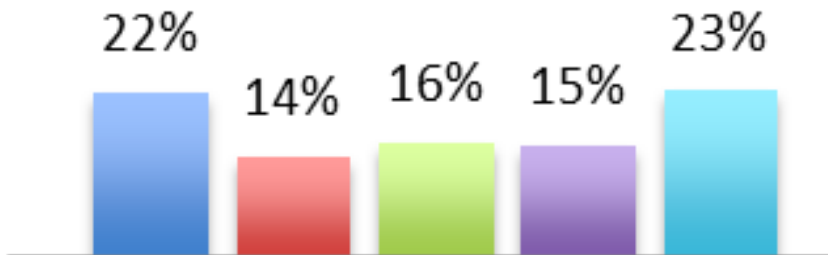
Communication

Is a success factor, you have to explain the environmental benefits and you have to repeat it over and over again.

A plan is needed.

Negatives

Not sorted food waste in the bins



If the driving force is not environment, money definitely is.

Less food waste lower food expenses.

During the pandemic a public debate has been a eye opener



Some distribution costs

- Investment in machinery and building estimates at EUR 3,7 millions
- No additional collection costs
- Annual cost for food waste bags estimates to EUR 247 000
- Collection bags is made by recycled plastic, degradable options are available

Key figures

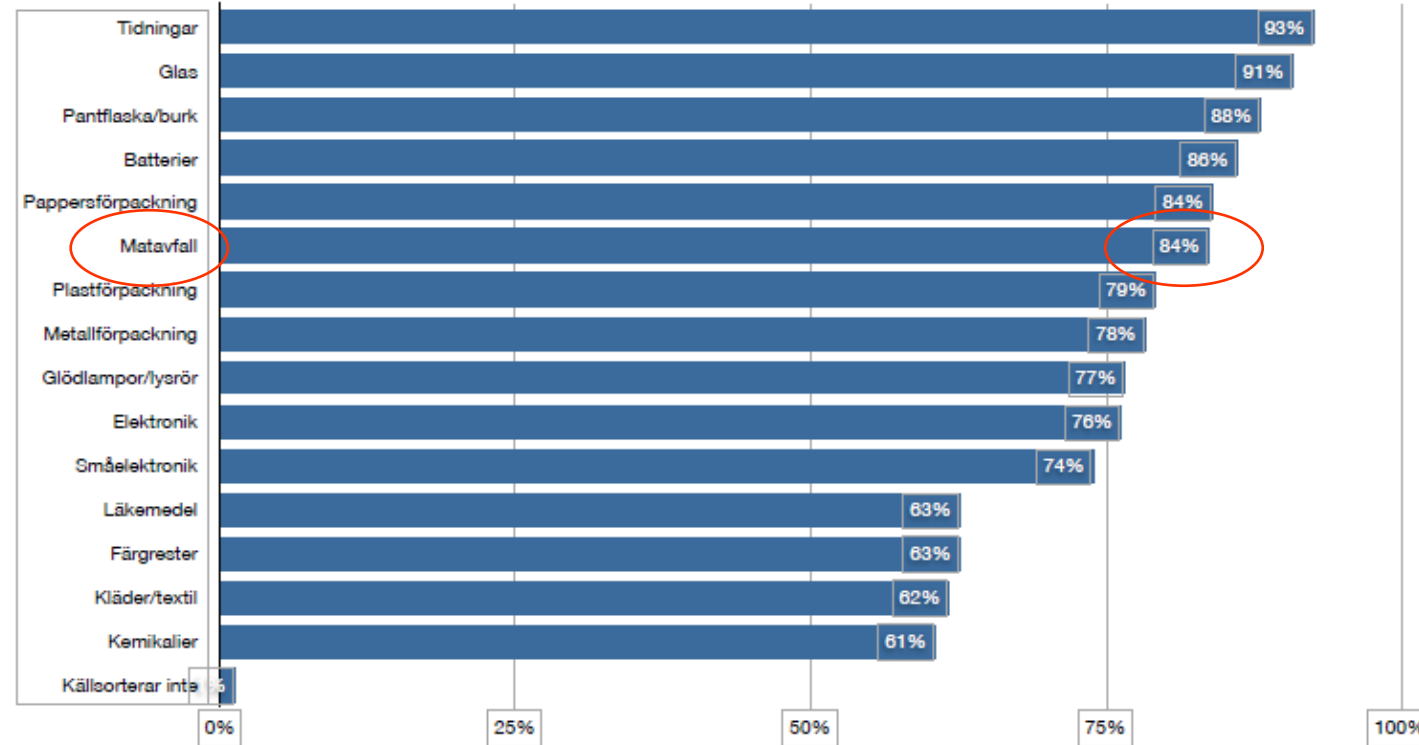
	<u>Goal</u>	<u>Result</u>
Sorting rate	50 %	61,5
Food in residual waste	<20 %	27,3
Degree of purity	>98 %	98,5
Not packaged waste	<10 %	5,6

Challenge:

Food waste in the residual waste consists of packaged food waste.
The challenge is to reduce food waste.



Customer survey



84 % of the households sorting out food waste

QUESTIONS?



JAFO Miljökonsult AB
Email: forsjan00@gmail.com
Phn: +46 70 260 28 16



Tack
för-resten!